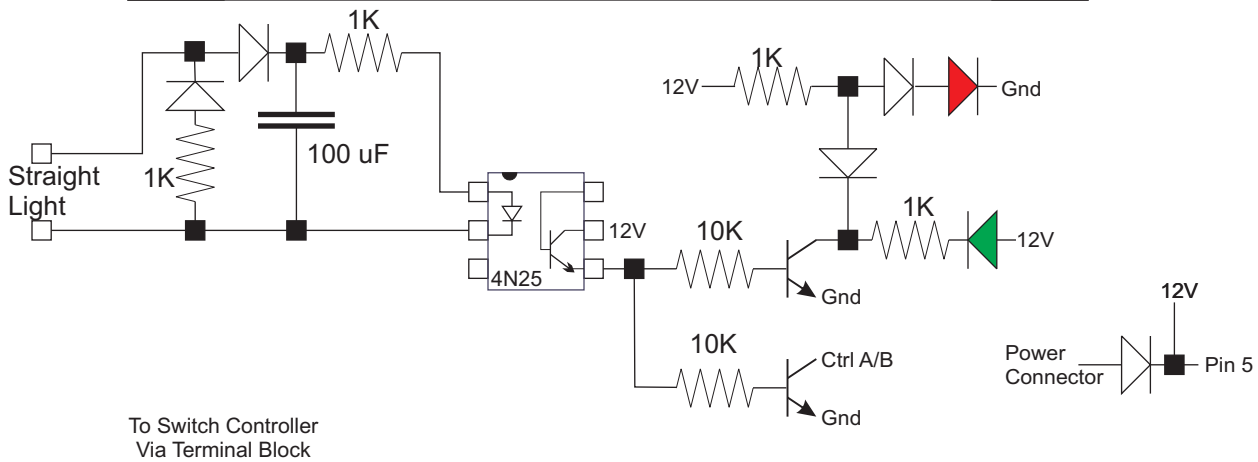
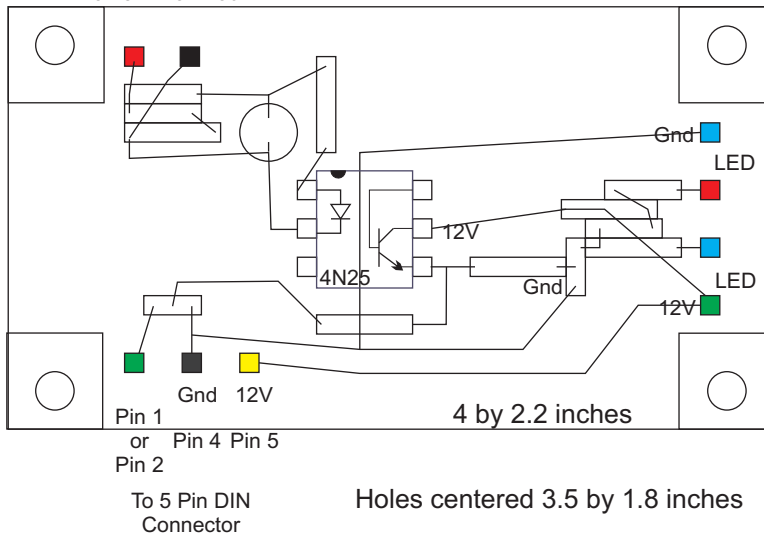


Radio Shack  
Box 5 by 2.5 by 2



To Switch Controller  
Via Terminal Block



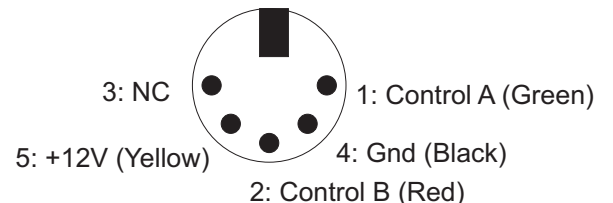
2 Boards (vertically Stacked)  
1 Board for 5 pin DIN Pin 1  
1 Board for 5 pin DIN Pin 2  
Can configure which switch  
position controls which pin

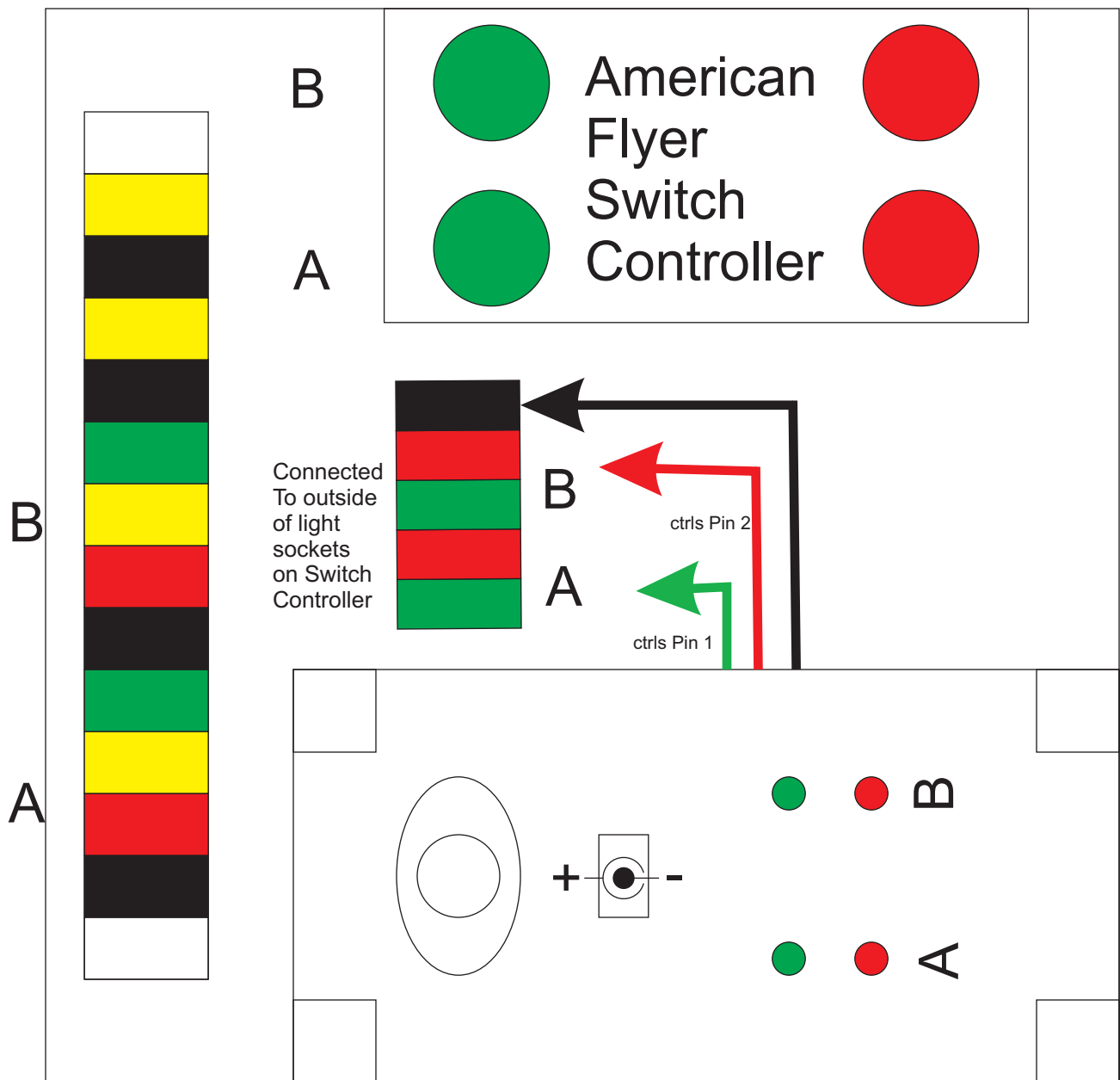
This circuit is used to sense  
the position of a remote switch  
based on the indicator light of  
the Switch Controller. Note this  
circuit will fail if the switch is changed  
manually, or if the switch is in the  
“off” position.

# Switch Indicator

Norbert Doerry  
January 18, 2009

5 Pin DIN  
Female Connector





6.5 by 6.5

Switch Indicator  
 Norbert Doerry  
 January 18, 2009

